

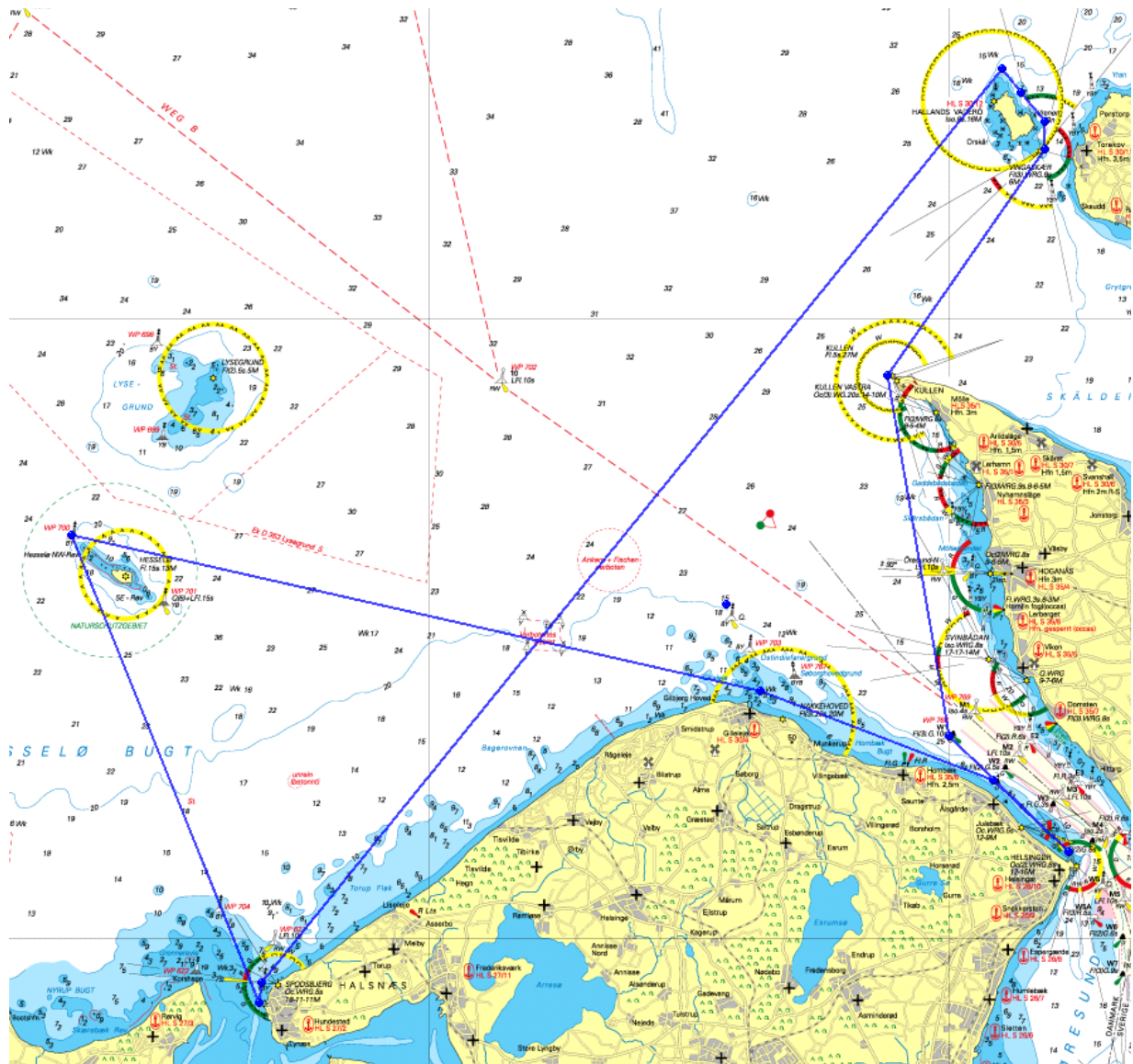
Watski2Star Kattegat Race 2010

Route Distance: 118 NM Estimated Time: 23:40 Average speed: 5 knt.

Waypoints

Leg	Name / Position / Elevation	Bearing	Distance	Ascent	Time	Comments	Photo
0	Helsingør 56°02.786'N, 12°36.971'E 0 ft						
1	Julebæk 56°05.122'N, 12°32.567'E 0 ft	313°T	3.4 NM	0 ft	0:40		
2	Gilleleje 56°08.023'N, 12°19.136'E 0 ft	291°T	8.06 NM	0 ft	1:36		
3	Hesselø NV 56°13.046'N, 11°39.315'E 0 ft	282°T	22.8 NM	0 ft	4:33		
4	Hundested 55°57.913'N, 11°50.160'E 0 ft	158°T	16.3 NM	0 ft	3:16		
5	Spodsbjerg V. bøje 55°58.554'N, 11°50.287'E 0 ft	006°T	0.647 NM	0 ft	0:07		
6	Hallands Väderö N 56°27.983'N, 12°33.096'E 0 ft	039°T	38 NM	0 ft	7:35		
7	WP0006 56°27.219'N, 12°34.212'E 0 ft	141°T	0.985 NM	0 ft	0:11		
8	Vrenen Bake 56°26.316'N, 12°35.542'E 0 ft	140°T	1.17 NM	0 ft	0:14		
9	Vingaskär 56°25.409'N, 12°35.581'E 0 ft	178°T	0.91 NM	0 ft	0:10		
10	Kullen 56°18.181'N, 12°26.489'E 0 ft	214°T	8.83 NM	0 ft	1:45		
11	W1 56°06.532'N, 12°30.019'E 0 ft	170°T	11.8 NM	0 ft	2:22		
12	Helsingør 56°02.798'N, 12°36.970'E 0 ft	133°T	5.4 NM	0 ft	1:04		
Totals:			118 NM	0 ft	23:40		

Overview Map



© NAUTISCHE VERÖFFENTLICHUNG/NAUTISCHE VERÖFFENTLICHUNG
 Prepared with Memory-Map