



Watski2Star 2011



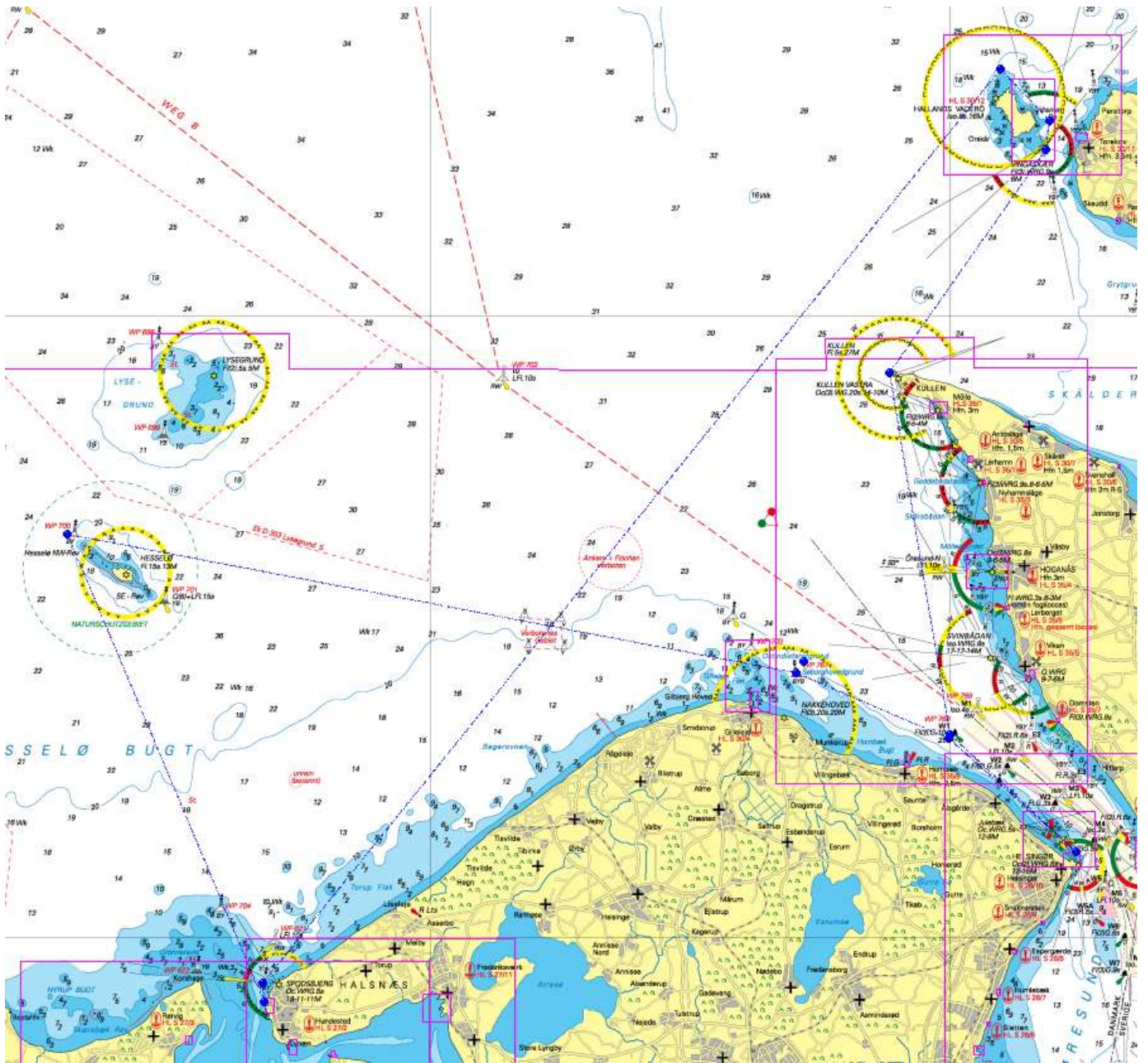
Distance: 119 NM

Estimeret tid: ca. 33 timer
ved 4 knob incl. Pitstop

Waypoints kun vejledende, der må ikke sejles efter dem.

	Name / Position / Elevation	Bearing	Distance	Ascent	Time
0	Helsingør 56°2'45.7"N, 12°37'14.3"E 0 ft				
1	W1 56°6'25.9"N, 12°29'54.6"E 0 ft	311°T	5.51 NM	0 ft	1:22
2	Gilleleje 56°8'33.0"N, 12°21'05.0"E 0 ft	293°T	5.38 NM	0 ft	1:20
3	Hesselø NV 56°13'00.3"N, 11°39'03.6"E 0 ft	280°T	23.9 NM	0 ft	5:58
4	Hundested 55°57'57.1"N, 11°50'22.3"E 0 ft	157°T	16.4 NM	0 ft	4:05
5	Spodsbjerg V. bølge 55°58'33.3"N, 11°50'17.2"E 0 ft	355°T	0.606 NM	0 ft	0:09
6	Hallands Väderö N 56°27'51.8"N, 12°32'54.8"E 0 ft	039°T	37.8 NM	0 ft	9:26
7	Vrenen Bake 56°26'12.8"N, 12°35'45.2"E 0 ft	136°T	2.28 NM	0 ft	0:34
8	Vingaskär 56°25'18.5"N, 12°35'29.9"E 0 ft	188°T	0.918 NM	0 ft	0:13
9	Kullen 56°18'10.9"N, 12°26'29.4"E 0 ft	215°T	8.72 NM	0 ft	2:10
10	W1 56°6'33.2"N, 12°30'01.1"E 0 ft	170°T	11.8 NM	0 ft	2:57
11	Helsingør 56°2'45.8"N, 12°37'14.3"E 0 ft	133°T	5.55 NM	0 ft	1:23
Totals:			119 NM	0 ft	1 day, 5:42

Overview Map



© NAUTISCHE VERÖFFENTLICHUNG/NAUTISCHE VERÖFFENTLICHUNG

Prepared with Memory-Map